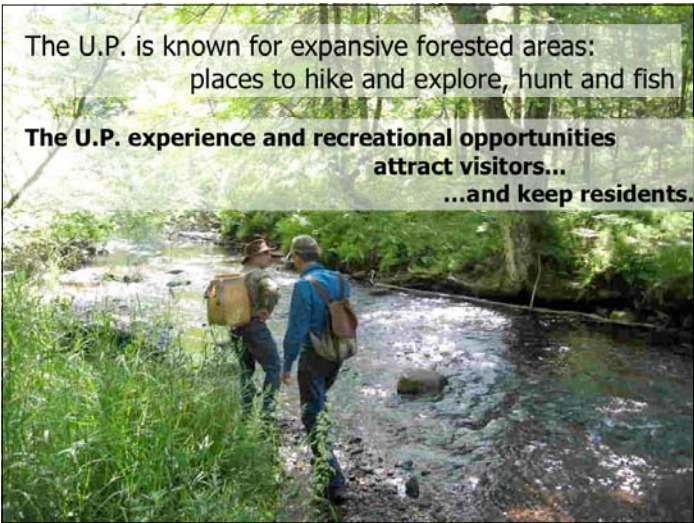
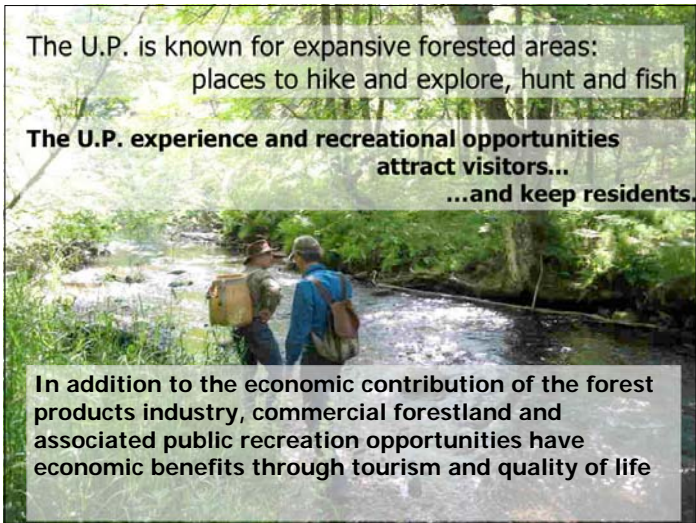


The U.P. is known for expansive forested areas:  
places to hike and explore, hunt and fish



The U.P. is known for expansive forested areas:  
places to hike and explore, hunt and fish

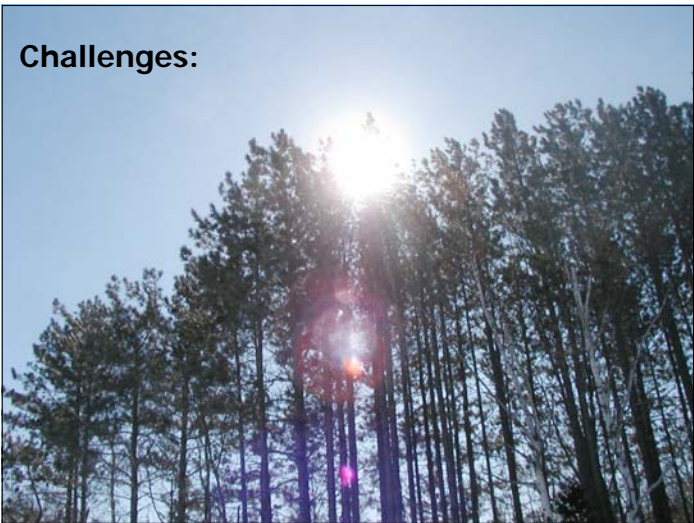
**The U.P. experience and recreational opportunities  
attract visitors...  
...and keep residents.**



The U.P. is known for expansive forested areas:  
places to hike and explore, hunt and fish

**The U.P. experience and recreational opportunities  
attract visitors...  
...and keep residents.**

**In addition to the economic contribution of the forest  
products industry, commercial forestland and  
associated public recreation opportunities have  
economic benefits through tourism and quality of life**



**Challenges:**



### Challenges:

#### Economic situation

- U.P. Forest Products Industry has stiff competition
- State and local governments facing budget crises
- Fuel prices and economic hardships affect tourism economy



### Challenges:

#### Economic situation

- U.P. Forest Products Industry has stiff competition
- State and local governments facing budget crises
- Fuel prices and economic hardships affect tourism economy

#### Forest management

- More difficult with fragmented ownership
- Recreational user conflicts
  - interfere with forest management
- Temporary arrangements and uncertain future for established trails systems



### Challenges:

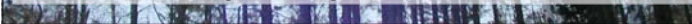
#### Economic situation

- U.P. Forest Products Industry has stiff competition
- State and local governments facing budget crises
- Fuel prices and economic hardships affect tourism economy

#### Forest management

- More difficult with fragmented ownership
- Recreational user conflicts
  - interfere with forest management
- Temporary arrangements and uncertain future for established trails systems

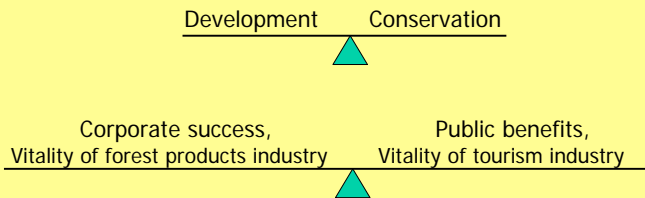
- Examples: - Snowmobile trail network in Western U.P.  
- Dog sledding access



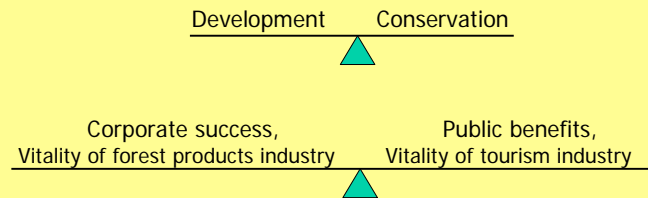
The U.P. situation demonstrates the need to balance:



**The U.P. situation demonstrates the need to balance:**



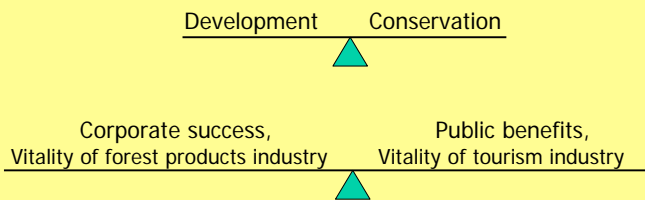
**The U.P. situation demonstrates the need to balance:**



**These do not have to be competing goals**

Conservation and public benefits can help balance the corporation's books and support our economy. **How?**

**The U.P. situation demonstrates the need to balance:**



**These do not have to be competing goals**

Conservation and public benefits can help balance the corporation's books and support our economy. **How?**

**As part of a sustainable U.P. economy.**







**Working Forest Conservation Easements:**  
Land protection agreements to promote sustainable forestry with the potential to include numerous other benefits.



**Working Forest Conservation Easements:**  
Land protection agreements to promote sustainable forestry with the potential to include numerous other benefits.

- Can involve private land conservation organizations, local government units and/or MDNR.
- Rights to protect conservation values and ensure public access and use benefits are purchased from corporate forestland owner
- Expertise in easement documentation and monitoring is essential – a role suited to land trusts and conservancies.



**Working Forest Conservation Easements:**  
Land protection agreements to promote sustainable forestry with the potential to include numerous other benefits.

- Can involve private land conservation organizations, local government units and/or MDNR.
- Rights to protect conservation values and ensure public access and use benefits are purchased from corporate forestland owner
- Expertise in easement documentation and monitoring is essential – a role suited to land trusts and conservancies.

**Land remains in private ownership**

- Stays on the tax rolls
- Entirely compatible with CF and forest certification programs
- Can allow for development appropriate to project goals



**Working Forest Conservation Easements:**  
Land protection agreements to promote sustainable forestry with the potential to include numerous other benefits.

- Can involve private land conservation organizations, local government units and/or MDNR.
- Rights to protect conservation values and ensure public access and use benefits are purchased from corporate forestland owner
- Expertise in easement documentation and monitoring is essential – a role suited to land trusts and conservancies.

**Land remains in private ownership**

- Stays on the tax rolls
- Entirely compatible with CF and forest certification programs
- Can allow for development appropriate to project goals

**Third party oversight**

- Monitor land uses and management regimes
- Stewardship assistance
- Designated enforcement authority







## Northern Great Lakes Forest Project

### THE BASICS

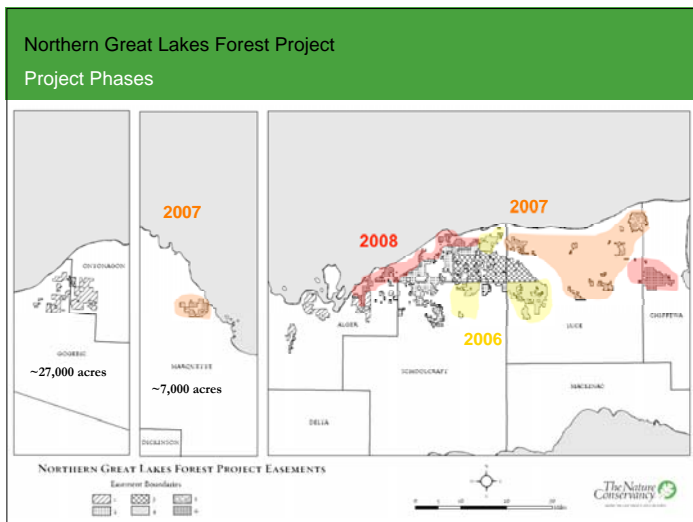
Purchase and Sale Agreement includes 271,124 acres across 7 counties:

#### **247,806 acres working conservation easement**

- Land owned and managed by The Forestland Group, LLC
- Easement acquired by The Nature Conservancy and transferred to the State of Michigan

#### **23,318 acres of fee land**

- Land owned and managed by The Nature Conservancy



## Northern Great Lakes Forest Project

### WORKING FOREST CONSERVATION EASEMENT DETAILS

- **Public Recreational Use**
- **Forest Management Practices**  
(FSC equivalent **OR** Prescriptive Language in Easement, Section 6)
  - a. Forest management in the absence of certification
  - b. Forest Stewardship Council Certification (or equivalent)
- **Restrictions on Development**
  - a. Restricted Development Parcels (RDP's)
  - b. No Development Units (NDU's)
  - c. Recreational leases
  - d. No Build Areas Around Specified Lakes
- **Communication Towers**



Northern Great Lakes Forest Project  
Specified No Development Lakes

Easement Number	Specified Lakes
1	NONE
2	Buck, Cusino*, Lavender, Moccasin, Pothole, Panther, Fox
3	Cloverleaf, Mitchell**, North**, Panther, Fox
4	Tahquamenon***, Devils Hollow/Bear, Goose, Bass*
5	NONE
6	NONE



\* has state campground  
\*\* has existing recreational lease  
\*\*\* largest lake within complex

### What is the process?

- Starts with a perceived need or goal - community desires
- Assess natural resources, conservation values and recreation benefits
- Open communication – involve all stakeholders


### Working forest easement success requires:

- Creativity
- Effective strategy – build partnerships, secure funding
- Active negotiation
- Patience

### The scale of the project will depend on many factors:

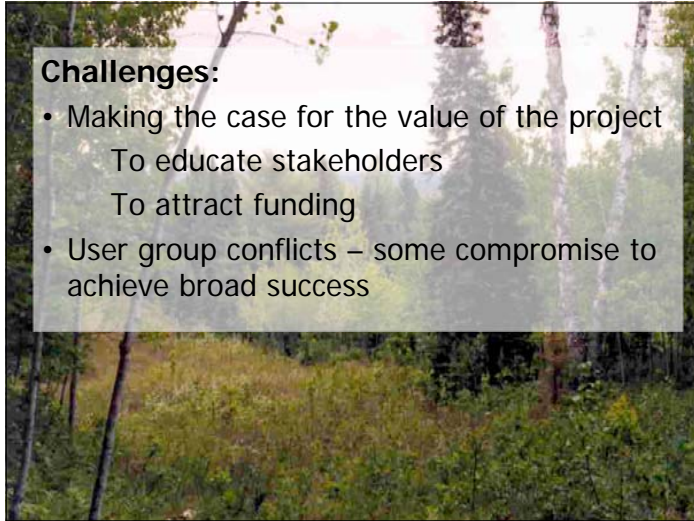
- Community needs/goals
- Conservation value and impact
- Landowner's situation
- Cost



A photograph of a forest with tall, thin trees and dense green foliage, serving as a background for the text.

**Funding sources:**

- Local support
- State Support – Michigan Natural Resources Trust Fund
- Federal Support – Forest Legacy Program
- Private foundations – recognize the cost effectiveness, the breadth of public and environmental benefits, and the value of partnership for project success and community well-being

A photograph of a forest with tall, thin trees and dense green foliage, serving as a background for the text.

**Challenges:**

- Making the case for the value of the project
  - To educate stakeholders
  - To attract funding
- User group conflicts – some compromise to achieve broad success