



## ***A Community Forum***

***Featuring Corporate Forest Land Owners  
And Natural Resource Experts***

***Sponsored by the National Wildlife Federation  
And Upper Peninsula Resource Conservation &  
Development Council with assistance from  
Houghton Keweenaw Conservation District***

### **Program**

#### **Welcome**

*Phil Musser, Executive Director  
Keweenaw Economic Development Alliance (KEDA)*

#### **Presentation of Research Findings**

*The Upper Peninsula in Transition  
Dr. Robert Froese, Michigan Technological University*

*The Role of the Forest Products Industry in the UP Economy  
Dr. Larry Leefer, Michigan State University*

*Local Government and Community Factors  
Brad Garmon, Michigan Environmental Council*

#### **Commercial Forest Act: An Overview**

*Ernie Houghton, Michigan DNR*

#### **Corporate Landowner's Perspective**

*Walt Arnold, Sustainable Forest Technologies  
Mark Sherman, Plum Creek  
Shawn Hagan, The Forestland Group*

#### **Small Group Discussions**

Identification of local issues, strategies and recommendations

#### **Luncheon**

#### **Discussion of Small Groups' Issues, Opportunities & Strategies**

#### **Public Access and Recreation**

*Ron Yesney, Michigan DNR*

#### **Tools for Conservation and Land Use Management**

*Evan McDonald, Keweenaw Land Trust  
Brian Carlson, The Nature Conservancy*

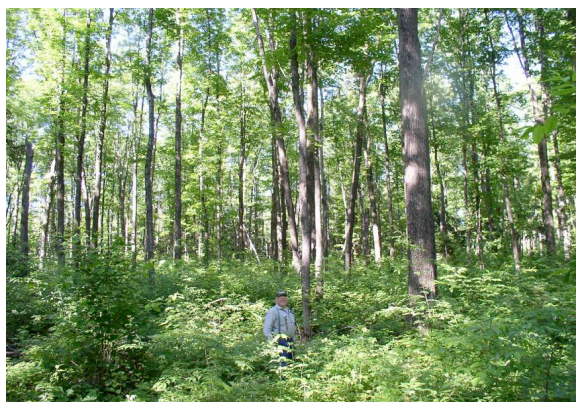
#### **Concluding Comments**

**Thursday, June 21, 2007**

**9:15 am – 3:00 pm**

(Registration starting at 8:45 am)

**UPPCO Building  
600 E. Lakeshore Drive  
Houghton, Michigan**



Please register by Friday, June 15, 2007

To register or for more information, contact  
Sue Haralson at the Houghton Keweenaw  
Conservation District at  
(906) 482-0214 or by e-mail at  
[sue.haralson@mi.nacdn.net](mailto:sue.haralson@mi.nacdn.net)

Qualifies for .6 CEU for Master Citizen  
Planner Credential.

Financial assistance for this project was provided in part by  
People and Land, a project of the W.K. Kellogg Foundation  
administered by Public Sector Consultants and the Land  
Policy Program at Michigan State University